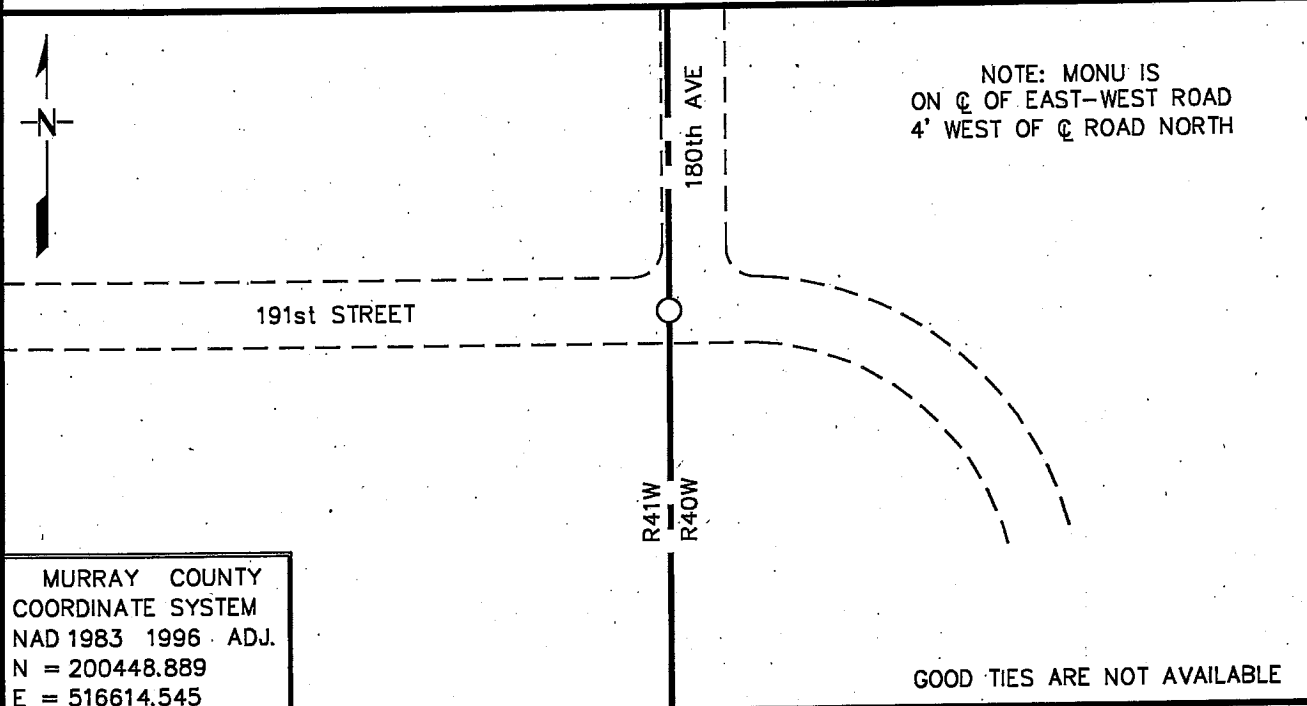


# CERTIFICATE OF LOCATION OF GOVERNMENT CORNER

NORTHEAST Corner of Section 36, Township 108 N, Range 41 W  
5th Principal Meridian, State of Minnesota, County of MURRAY

At the corner location shown on the sketch:

- On 6/10/2008 found a 10" X 11" GRANITE STONE WITH A POINTED TOP, DOWN 2.0'  
DATE
- left monument as found,     lowered monument,     removed monument (explain)
- On 6/10/2008 Placed a 3/4" X 12" REBAR WITH PLASTIC CAP STAMPED  
DATE  
"MN DNR LS 17003", DOWN 0.5' OVER STONE



Statement of evidence for this corner location is on back of this page. 11/3/2008  
SPK00220.00.00.01

I certify that this document was researched and prepared by me or under my direct supervision.

SIGNATURE *Bruce W. Shippert* DATE 10/14/09 License Number 17003

Title:     Land Surveyor     Professional Engineer     County Surveyor     County Engineer

The DNR Division of Lands and Minerals contacted the following for survey information:

Minnesota Secretary of State's Office  
Murray County Recorder's Office  
Murray County Highway Engineer's Office  
Bueltel-Moseng Land Surveying of Marshall  
Zieske Land Surveying Inc. of Windom  
Madsen Land Surveying Inc. of Fairmont  
Pellinen Land Surveying of Hutchinson

- 1861 U.S. General Land Office notes, obtained from the Secretary of State's Office, show the corner marked with a wood post and a charred stake in a mound of earth with trench and pits as per instructions.
- 1913 September 15, Surveyor's Record Book, obtained from the County Highway Engineer's Office, contains a survey of Section 25 by J.H. Woolstencroft. Survey shows the following at corner:  
stone in grade
- 1913 September 15, Murray County Highway Department section corner information website, shows a stone in grade at corner.
- 1936 A Survey Map by the National Park Service that shows Sections 5 and 6, T107N, R40W, Sections 1 and 2, T107N, R41W, and Sections 35 and 36, T108N, R41W, in the possession of the DNR Division of Lands and Minerals, shows that a stone was found at the corner. The corner is shown:  
at the intersection of the centerline of roads north and west
- 1972 September, Surveyor's Record Book, obtained from the County Highway Engineer's Office, shows a stone and wood stake with steel bolt on top at corner with the following ties:  
nail & disc in T.C.T, 52.47 feet, northwest  
nail & disc in side of 6" tree, 38.57 feet, southwest  
nail & disc in power pole, 50.85 feet, southeast  
nail & disc in northwest side of tree, 82.00 feet, west-southwest
- 1973 The plat of PLEASANT VIEW ACRES SUBDIVISION in Sections 30,31,36 by J.S. Richmond, LS 2129, obtained from the County Recorder's Office, shows a 1 ½ inch bold in place at the section corner.
- 2008 June 10, the DNR Division of Lands and Minerals hired a backhoe, operated by Butch Barton of B & L Excavation, Inc. of Currie, to dig for evidence of a monument at the corner. A 12 inch long by ¾ inch diameter bolt with a 1 ½ inch square top was found down 1 foot. Further excavating revealed a 10 inch by 11 inch granite stone with a pointed top down 2.0 feet and 0.53 of a foot southwest of the found bold.

Searched for but found no evidence of the record ties.

Northeast Corner of Section 36, Township 108 North, Range 41 West, Page 2 of 2

Analysis of the above information led the DNR Division of Lands and Minerals to conclude that the found stone marks the location of the corner. A 3/4 inch diameter by 24 inch long rebar was set down 2.0 feet on the south side of the found stone. Also, set a 3/4 inch diameter by 12 inch long rebar with a plastic cap stamped "MN DNR LS 17003" over the found stone. The found bolt was discarded.